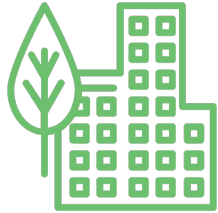




# Product Deck

# Why Choose Us?



## Green Building Certification

IGBC and GRUHA  
Green Building  
certification



## Environment Clearance

Meet your OWC requirements  
and renewable energy needs  
at once



## Improve Your ESG Score!

Make your organization  
more Green and  
Sustainable

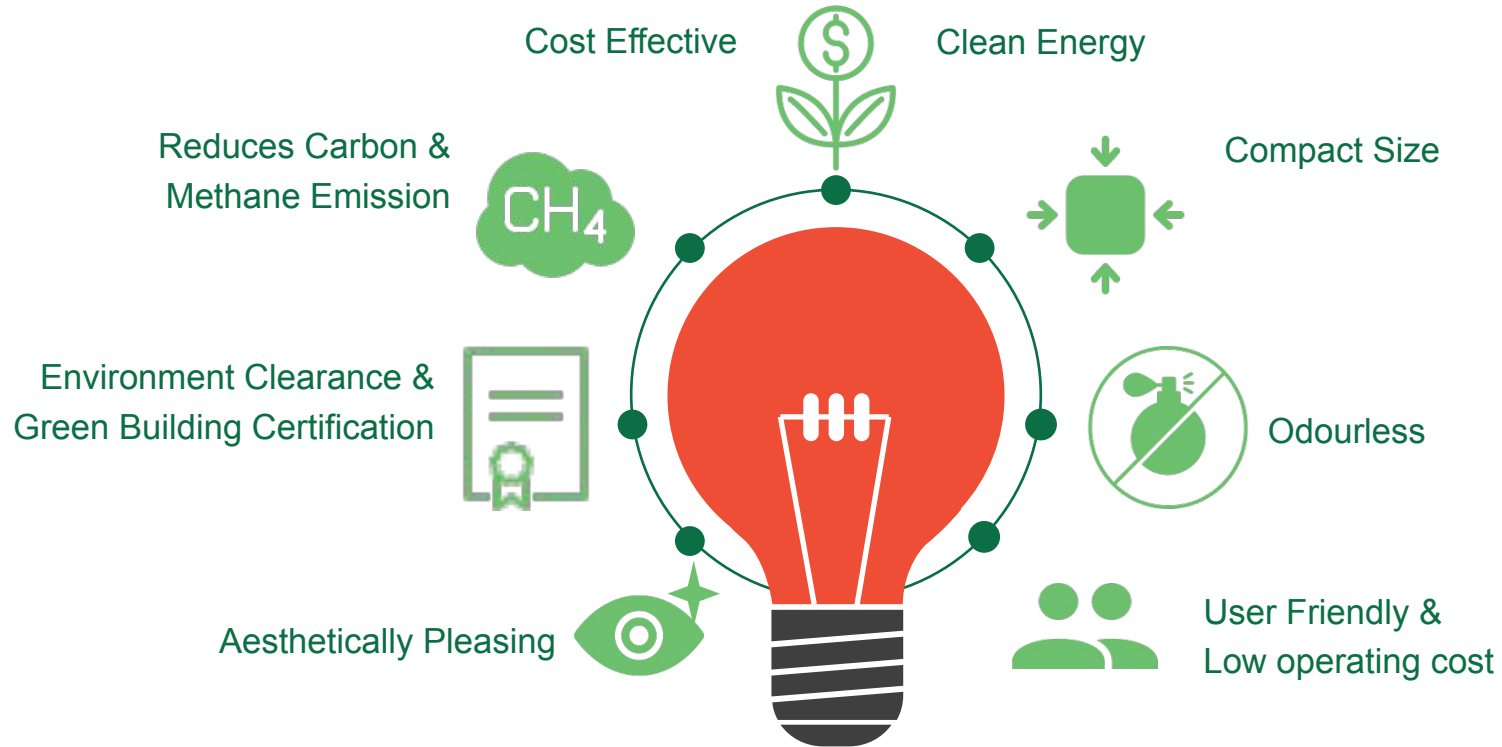
# Aindri Plant



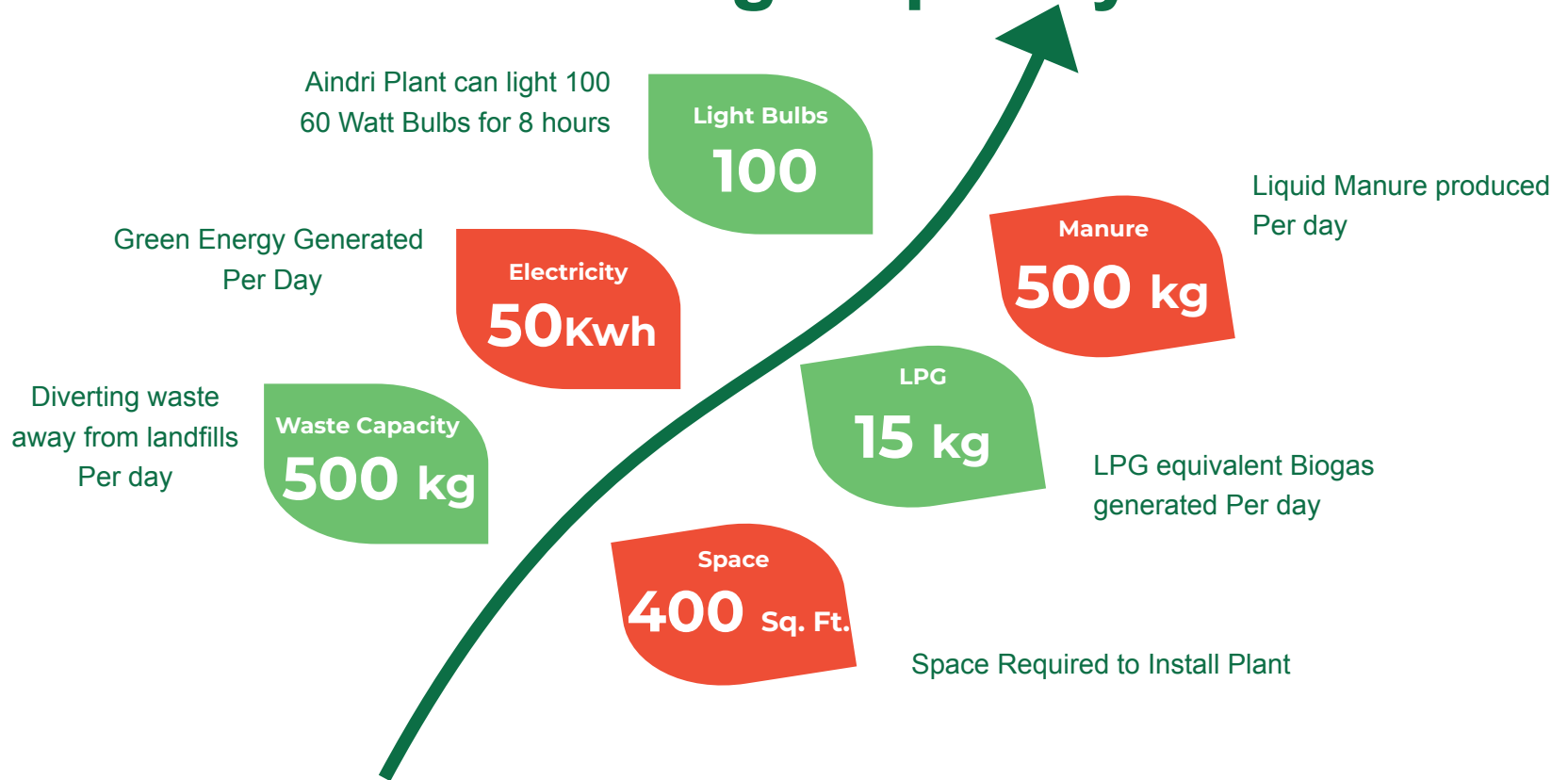
# Captive Consumption Aindri Plant



# Benefits



# Processing Capacity



# Operating Cost

Overall, the operating cost of the Aindri biogas plant can be offset by revenue from the sale of electricity and fertilizer generated from the process.

Below are costs for an Aindri Plant with 500 Kg per day processing capacity

**₹1.8L**

**Labour  
Cost  
(Per year)**

**₹0.1 L**

**Electricity  
Cost  
(Per year)**

**₹0.5L**

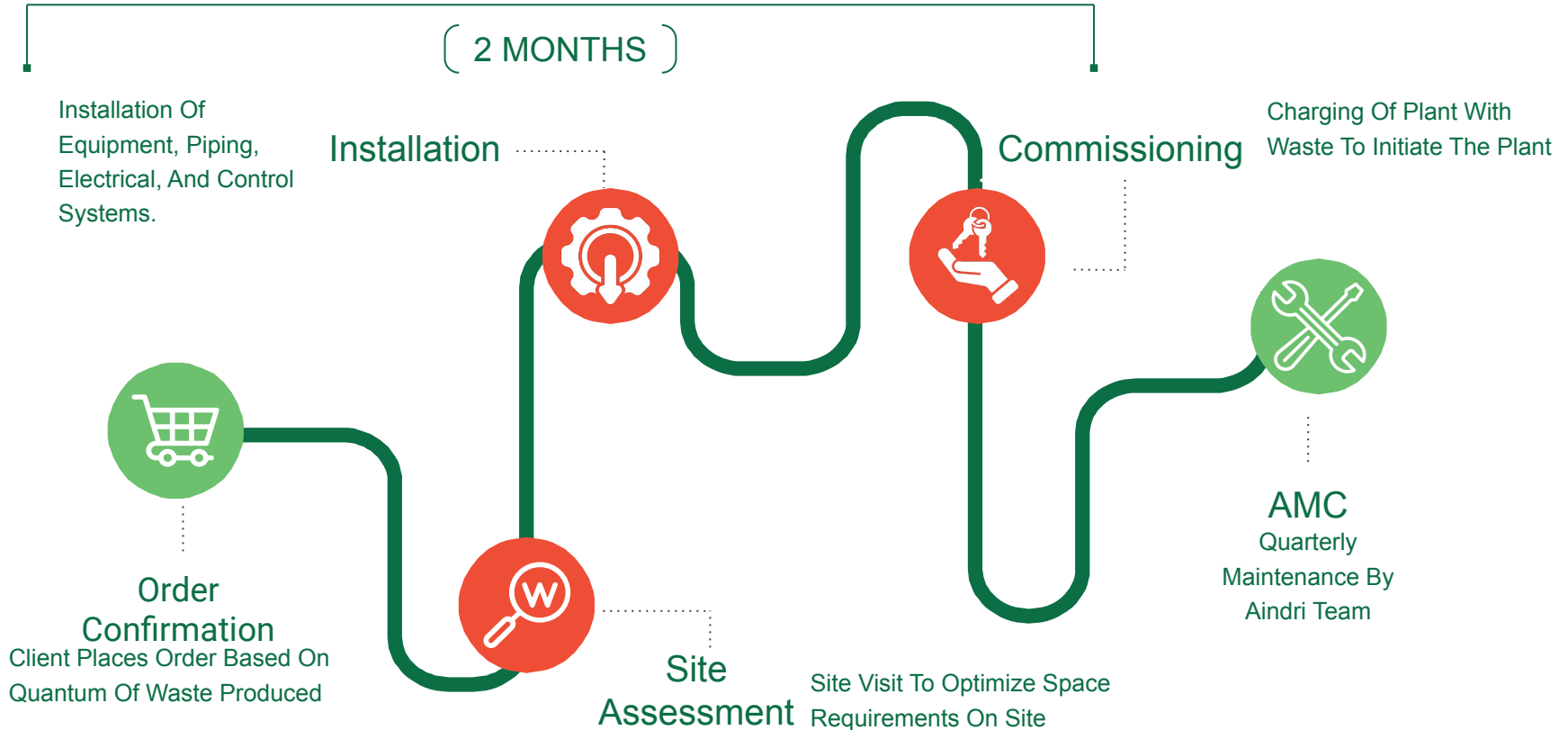
**Annual  
Maintenance  
Contract  
(Per year)**

**₹2.40L**

**Total Operating  
Expenses  
(Per year)**



# Typical Roadmap





Impact of a Aindri Plant with  
Processing Capacity of 500 kg  
per day



# Impact



**1,82,500 Kg Waste**

Quantity of waste prevented from reaching the landfill every year



**8,86,959 g CO<sub>2</sub>**

Quantity of Carbon Emission abetted per year



**18,250 kWh Electricity**

Quantity of Renewable energy generated per year



**5,475 kg LPG**

Quantity of Renewable energy generated per year



**3,65,000 kg Liquid Manure**

Quantity of Organic Fertilizer Generated per year

# Cost Savings

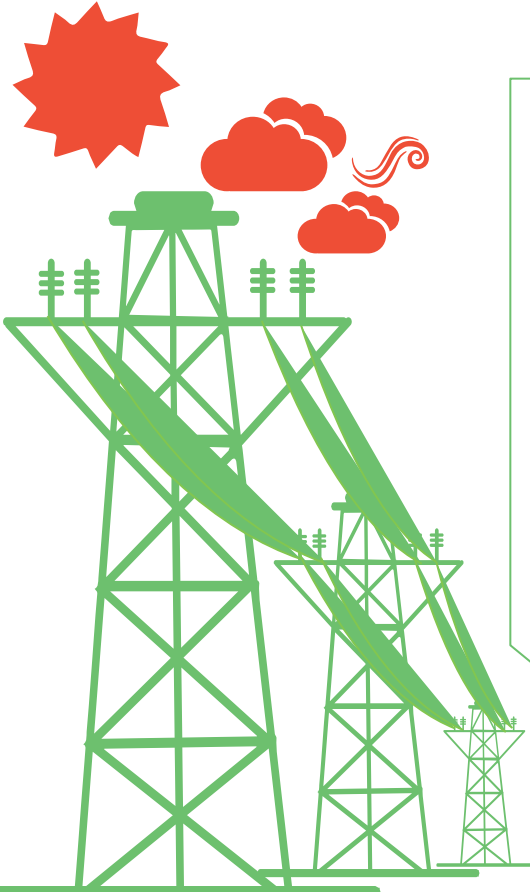
Aindri Plant meets Solid Waste Management + Renewable Energy Mandate  
Reducing the need for Solar Panels

- 1000 Kg Aindri plant generates = **100 units/day**
- 1kW solar panel produces = **4 units/day**
- 1 kW solar panel cost = **₹70,000**
- Reduction in number of panels  
=  $100 \div 4 = \mathbf{25 \text{ panels}}$
- Cost saved  
=  $25 \times 70,000$   
= **₹ 17,50,000**

**Additional savings compared to OWC Setup**



# Details



## 500 KG Plant

Area Required  
**400 sqft**

Available in

Cooking Gas Variant

Electricity Variant

## 750 KG Plant

Area Required  
**600 sqft**

Available in

Cooking Gas Variant

Electricity Variant

## 1000 KG Plant

Area Required  
**800 sqft**

Available in

Cooking Gas Variant

Electricity Variant

## 2000 KG Plant

Area Required  
**2000 sqft**

Available in

Cooking Gas Variant

Electricity Variant

- Processing Capacity is designed for waste generated per day on premises
- One Apartment /Housing unit produces approximately 1 kg of waste
- Additional G.S.T. will be charged at prevailing rates



**Contact us:**

Kausthav Ray

Email: [kray@aindri.io](mailto:kray@aindri.io) | Mobile:9861400396